



MANAGEMENT OF

'DIABETES MELLITUS' NEEDS NOT ONLY
TO ACHIEVE BLOOD GLUCOSE TARGET BUT ALSO TO
REDUCE RISK OF COMPLICATIONS

AMREE PLUS[®]



CLINICALLY EVALUATED AT AIIMS, NEW DELHI

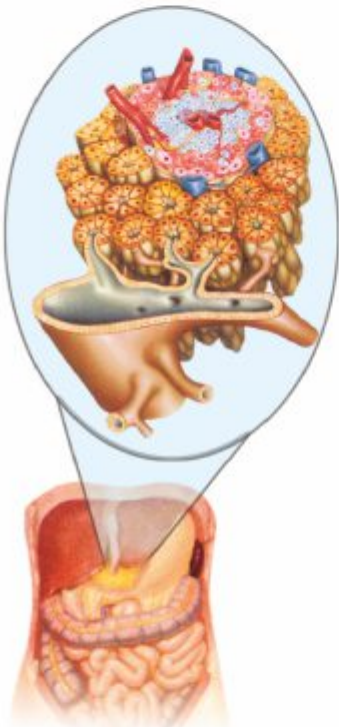
For its efficacy, Non-toxicity and safety profile in type 2 Diabetes Mellitus

AMREE PLUS[®]

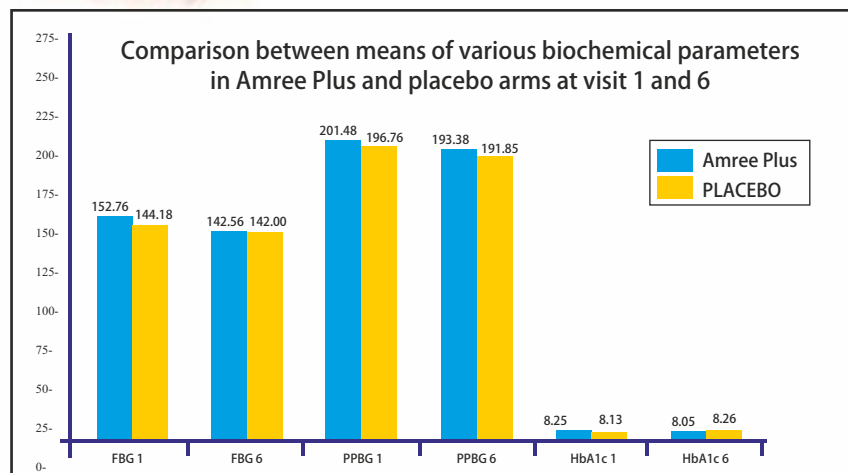
with **PLUS**
benefits of System Toner



Established as Comprehensive Anti-Hyperglycemic + System Toner



A double blind placebo controlled study on "Amree Plus" for its efficacy & non-toxicity in Type-II Diabetes Mellitus patients was conducted at **AIIMS**, accepted & presented at **APICON DIAMOND, MUMBAI**.



- ◆ Prominent anti-hyperglycemic effect.
- ◆ Effect on fasting blood glucose was more than post prandial blood glucose.
- ◆ Significant lowering effect on glycosylated hemoglobin.
- ◆ Improvement in Renal and Liver function tests.

For Safe, Steady and Systemic Results...

AMREE PLUS[®]

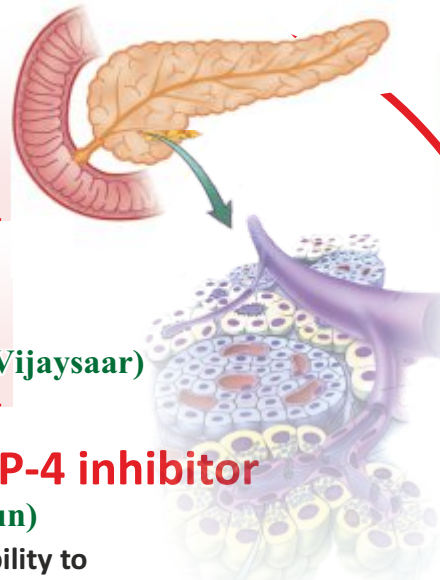
with **PLUS**
benefits of System Toner



Mechanism of Action -for controlling high blood glucose level

EFFECT OF A+ ON PANCREAS

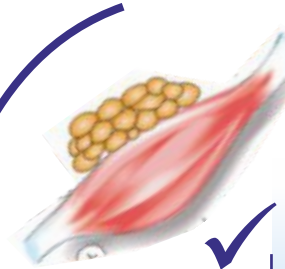
- ✓ Potentiates glucose mediated insulin secretion
Nigella sativa (Kalaunji)
- ✓ Repairs β -cells
Pterocarpus marsupium (Vijaysaar)
- ✓ Acts as Potent DPP-4 inhibitor
Eugenia jambolana (Jamun)
Enhances the body's own ability to release insulin & regulate blood glucose level



Effectively controls **BLOOD GLUCOSE level**

EFFECT OF A+ ON MUSCLE & FAT

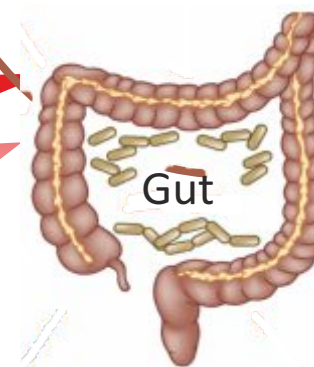
- ✓ Improves Lipoprotein lipase action
Coccinia indica (Kundru)
- ✓ Increases insulin sensitivity
Momordica charantia (Karela)



Decreases insulin resistance, making the cells more sensitive to effects of insulin & results in decreased blood sugar levels.

EFFECT OF A+ ON GUT

- ✓ Acts as Alpha-glucosidase inhibitor
- ✓ Delays glucose absorption
Gymnema sylvestre (Gudmar)



Provides anti-sweet principles, Gymnemic acids, Gurmarin which suppress taste responses to sugar. Curtails elevation of plasma glucose levels by filling the receptor location in absorptive external layers of the intestine.

EFFECT OF A+ ON LIVER

- ✓ Decreases hepatic glucose over-production
Eclipta alba (Bhringraj)
- Decreases activities of Glucose-6-phosphatase & Fructose 1,6 bisphosphatase, increases activity of Liver Hexokinase, thereby inhibiting gluconeogenesis



Maintains **NORMAL BLOOD GLUCOSE**

For Safe, steady and systemic glycemic control

AMREE PLUS[®]

with **PLUS**
benefits of System Toner



Prevents Diabetic Complications-Nourishes & Rejuvenates vital organs

Prevents Retinopathy



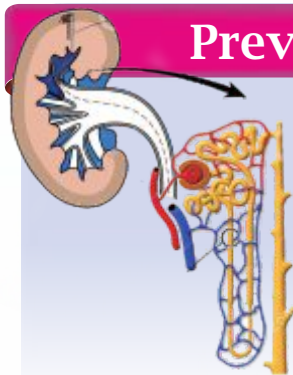
- Modulates polyol pathway
- Inhibits aldose reductase
- Decreases accumulation of sorbitol, helps prevent lens opacities and retinal damage due to flavonoids like **Butin, Quercetin**

Acts as Cardioprotective

- Acts as cardiovascular protective by **Omega-3&6**
- Strengthens walls of blood vessels by **Tannins**
- Helps lower plasma lipids levels
- Almond oil** fights in diabetes related heart diseases
- Octacosanol** from **Wheat germ oil** plays a key role in energy production in cells



Prevents Nephropathy



- Improves kidney functional capacity
- Stimulates regeneration
- Protect nephrons due to **Saponins in Punernava**

Improves Body defense system

- Improves local & cellular immunity, helps in Diabetic foot ulcer by Giloe
- Provides Anti-oxidant defence- **Lycopene**.
- Supplements **Lutein** from spinach- prevents effect of high glucose level on immune system cells



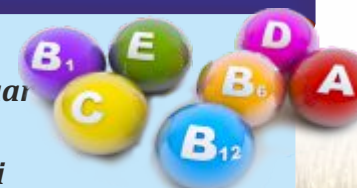
Prevents Neuropathy



- Rejuvenates, Protects & Strengthens neurons
- Reduces diabetic oxidative stress
- Regulates Nitric Oxide Production** by **Ashwagandha**

Supplements Micro-nutrients

- Phosphate**-makes more oxygen available to the tissues by Vijaysaar
- Chromium & Copper**-inhibits accumulation of Sorbitol by Methi
- Manganese & Magnesium** improve production of insulin by Jamun
- Zinc** improves Anti-oxidant enzymes in RBC's by Pumpkin seeds



For Safe, Steady and Systemic Results...

AMREE PLUS[®]

with **PLUS**
benefits of System Toner

Granules/Tablets/Liquid



Established Anti-Hyperglycemic + System Toner

EXCLUSIVE BENEFITS :

- FREE FROM THE RISK OF HYPOGLYCEMIA
- CHECKS OVER FATIGUE, EXCESSIVE THIRST & URINATION
- HELPS REGULATE GLUCOSE AND LIPID METABOLISM
- IMPROVES IMMUNITY AND ANTI-OXIDANT DEFENSE SYSTEM
- PREVENTS DIABETIC COMPLICATIONS
- ACTS AS CARDIO-PROTECTIVE
- A SAFE CO-PRESCRIPTION WITH OHG's

INDICATIONS :

- Type II Diabetes Mellitus
- Impaired Glucose Tolerance
- As adjunct to OHG's & Insulin
- In PCOS with Amycordial

DOSAGE: (Should be taken 20-30 minutes before meals)

in Mild conditions

Granules : 1/2 teaspoonful twice a day

Liquid : 1 teaspoonful twice a day

Tablets : 1 Tablet twice a day

or as directed by the Physician for varying severity conditions.



Efficient Glucose Control + Enhanced Systemic Integrity in Recognised Diabetes